



Model # ADL26L (Left hand door swing)
Model # ADL26R (Right hand door swing)

High Performance Air Curtain Refrigerator

The Aladdin Temp-Rite high performance air curtain refrigerator is designed to maintain the temperature of refrigerated pre-plated and pre-packaged food products during tray assembly. The horizontal and vertical flow of chilled air across the front of the refrigerator permits the door to be open during assembly.

SPECIFICATIONS: **REFRIGERATION SYSTEM:**

The condensing unit is located in the base of the cabinet for a lower center of gravity and added stability during transport. Enhanced ventilation is provided by removable louvered front and rear grills. Removable access panels located at the front and back of the unit permits easy access for servicing and cleaning the compressor and for servicing the electrical wiring. Air circulation fans and finned, forced convection coil are contained within a top mounted housing. The system has sufficient capacity to maintain cabinet temperatures with the door open under normal usage. All condensate water is removed automatically by an electric vaporizer.

Average Food Temperatures During Trayline

To maintain an average food temperature of 41°F or lower for 90 minutes with the door open, the procedures listed below must be followed:

- Pre-chill air curtain to factory set point of 34°F before loading any products
- The start temperature of all products loaded into the air curtain should be 40°F or below
- After loading, the door should be closed until the air curtain display temperature reaches factory set point of 34°F
- The positioning of products in the air curtain is paramount to obtaining the maximum temperature efficiency (see owner's manual for food placement)
- The humidity in the room should be below 45% and the room temperature should be 75°F or lower for maximum performance
- There should be a tray on each tray slide at all times
- Food replenishment loaded into the air curtain should be 40°F or below

STANDARD FEATURES:

- Stainless steel exterior and interior
- Automatic condensate evaporator
- R404-A Refrigeration system
- Automatic or manual defrost cycles
- Non-marking casters, (4) swivel with locks
- Full 270° door swing with magnetic catch for open position
- Flush recessed side grip handles for easy positioning/ cabinet maneuvering
- Tubular E-Z grip rear handles with end bumpers for ease of transport
- 10 Adjustable, removable stainless steel tray slides for standard 18" x 26" (45.7 cm x 66 cm) sheet pans with slanted positioning option
- Removable interior panels and brackets for easy cleaning
- Easy to read exterior digital thermometer (Controller setting for either Fahrenheit or Centigrade)
- Bottom mounted compressor for stability
- Seven foot cord and plug assembly
- UL and NSF listed



Specifications subject to change without notice

REV September 29, 2009



Aladdin Temp-Rite, P.O. Box 2978, Hendersonville, TN 37077-2978
Toll Free 1-800-888-8018 or Fax 615-338-3621
www.aladdintemprite.com

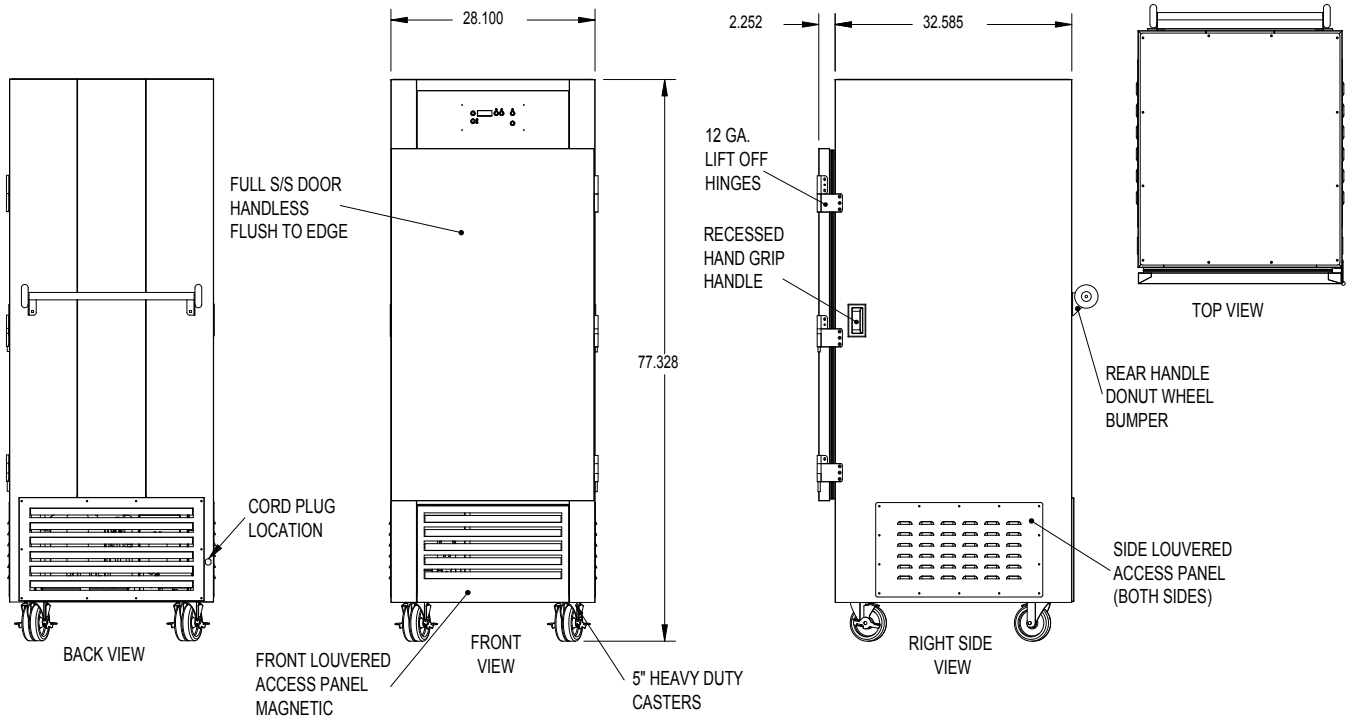
...better by degrees.

Model # ADL26L & ADL26R High Performance Air Curtain Refrigerator

Model # ADL26L & ADL26R

High Performance Air Curtain Refrigerator

Aladdin Temp-Rite
GROUP
FOODSERVICE EQUIPMENT



SPECIFICATIONS:

CABINET

Stainless steel construction with joints and seams completely closed and sealed. The cabinet is internally supported, braced and assembled into a single rigid unit. All interior corner bends are rounded to a 1/4" radius for ease of cleaning and conform to NSF codes.

The cabinet is designed with tapered interior air ducts on the left and right side of the interior and top. Each air duct has a series of strategically placed perforations for proper air flow to create an "air curtain". When the door is open a curtain of cold air is directed across the cabinet opening to keep hot air out and cold air in, assuring safe product storage during service hours.

PHYSICAL CHARACTERISTICS

Overall Cabinet Height (including casters)	77.326" (186.2 cm)
Overall Cabinet Width	28.1" (71.4 cm)
Overall Cabinet Length	34.8" (88.4 cm)
Overall Width w/door open (during trayline)	30.315" (77.0 cm)
Number of Pan Slides	10 @ 4.5" (11.4 cm)
Shipping Weight	560 lbs (254.5 kg)

ELECTRICAL CHARACTERISTICS

Condensing Unit Electric	120/60/1 PH
Condensing Unit Size	1/2 HP
Wattage	1668
Total Amps at Start-up	17.8
Total Amps - Normal Operation	14.0-15.0
Plug Configuration	NEMA 5-20P

Note: Unit should be operated on a 20 Amp dedicated circuit.



Aladdin Temp-Rite, P.O. Box 2978, Hendersonville, TN 37077-2978
Toll Free 1-800-888-8018 or Fax 615-338-3621
www.aladdintemprite.com

...better by degrees.